

CertainTeed  
**UnderShield®**  
Water Diversion System





## UnderShield® creates new possibilities for your home.

A beautiful deck is easy to love, from the top. Now, you can love your deck from underneath as well, with the beautiful possibilities of UnderShield®. A unique, vinyl shield and ceiling system, UnderShield turns an unsightly deck underside into a dry, beautiful ceiling, creating limitless options for new exterior living spaces.



*UnderShield Water Diversion System creates a formal yet inviting area. UnderShield in colonial white.*

### Dry by Design

UnderShield is dry by design, incorporating a special shield with channels that discreetly collect and drain precipitation away from under your deck, leaving the space beneath dry and comfortable.

### New or Existing Decks

Whether you're building a new deck that will double as a deck and ceiling, or if you're looking for more functionality for an existing deck, UnderShield is the perfect solution. The grid system is adjustable and easy to install in both applications.



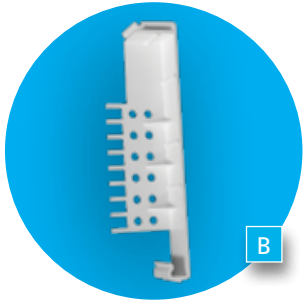
*Under the deck is a perfect area for storage of frequently used outdoor toys, lawn and garden equipment and more.*

*Create dry patio space under the deck and extend usable living space with a patio, screened porch or hot-tub retreat around the home. UnderShield in savannah wicker.*

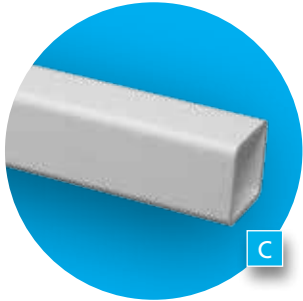




Designed to respond to the needs of building professionals and homeowners, UnderShield is easy to install to new or existing decks, and will maintain unobstructed air flow when properly installed. Panels can run parallel or perpendicular to the home, and an easy-to-use clip creates the desired pitch.



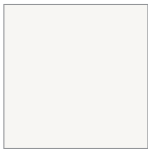
**B** Clip System comes with all stainless steel hardware (not shown)



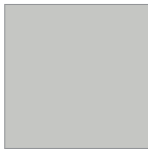
**C** Vinyl Grid System

### Long-Lasting Performance

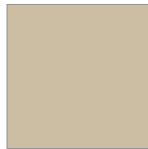
Like all CertainTeed building products, UnderShield is built to last, and designed to perform. The system consists of high-quality CertainTeed vinyl panels, similar to siding. Stainless steel hardware provides superior security and durability.



colonial white



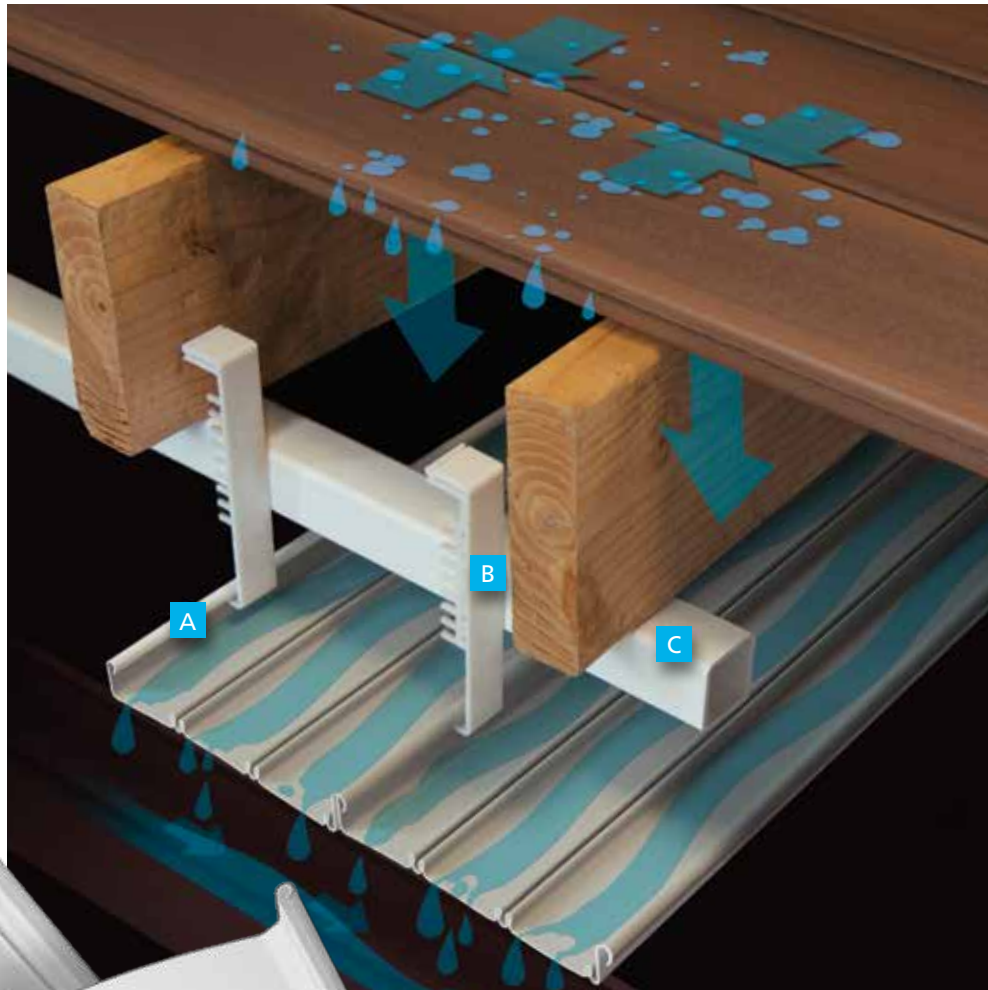
sterling gray



savannah wicker

UnderShield is available in beaded or chamfer panels (A). System also includes clips (B), grid system (C), fascia panels and stainless steel hardware. (fascia and hardware not shown).

- ◆ Low maintenance water diversion system.
- ◆ Easy to install adjustable grid system.
- ◆ Concealed clip system.
- ◆ Stainless steel hardware provides security and lasting performance.
- ◆ High quality vinyl panels.
- ◆ Available in 6"x 16' panels.
- ◆ Choice of 2 panel styles and 3 colors.
- ◆ Suitable for 1 and 2-story residential applications.
- ◆ Installs under the deck joist – no need to worry if the framing is 12" or 16" on center.
- ◆ Since it installs under the framing, it does not interfere with any bracing that may have been installed between joists.
- ◆ Helps maintain the required ventilation under the deck for most composite deck boards.
- ◆ Lifetime limited warranty.



As precipitation drips between deck boards it is collected directly below by UnderShield and diverted away leaving a dry space under your deck. (Gutter sold separately. Not a CertainTeed product.)



**CertainTeed products are designed to work together and complement each other in color and style to give your home a beautiful finished look.**



Polymer Shakes & Shingles



Fiber Cement Siding



Fence



Insulated Siding



PVC Exterior Trim & Beadboard



Decking and Railing



Vinyl Siding



Vinyl Carpentry® Trim



Housewrap



**Professional:** [facebook.com/CertainTeedFreedomofChoice](https://www.facebook.com/CertainTeedFreedomofChoice)  
**Consumer:** [facebook.com/CertainTeedLivingSpaces](https://www.facebook.com/CertainTeedLivingSpaces)

[ **Be Certain** ] Confidence worth building on.™

**ASK ABOUT OUR OTHER CERTAINTEED® PRODUCTS AND SYSTEMS:**

ROOFING • SIDING • TRIM • DECKING • RAILING • FENCE • FOUNDATIONS  
 GYPSUM • CEILINGS • INSULATION • PIPE

[www.certainteed.com](http://www.certainteed.com)    <http://blog.certainteed.com>

CertainTeed Corporation  
 P.O. Box 860  
 Valley Forge, PA 19482

**Professional:** 800-233-8990  
**Consumer:** 800-782-8777

© 1/14 CertainTeed Corporation, Printed in U.S.A.  
 Code No.40-70-400

